



FOR IMMEDIATE RELEASE

January 23, 2024

CONTACT

Chris Toler, Captain

925-440-2001

ctole@cccfd.org

**CON FIRE ANNOUNCES GROUNDBREAKING OF LAFAYETTE/WALNUT CREEK
SHADED FUEL BREAK**

**\$3 Million CAL FIRE Wildfire Prevention Grant to Fund Creation of a Shaded Fuel
Break Across Southern Lafayette and Walnut Creek**

CONCORD, CALIF., – Contra Costa County Fire Protection District (Con Fire) has received a \$3 million California Climate Investments Wildfire Prevention Grant from the California Department of Forestry and Fire Protection (CAL FIRE). The grant is for the creation of a shaded fuel break across southern Lafayette and Walnut Creek that will afford significant protection from wildfires for residents in the communities of Rossmoor and southern Lafayette. The tentative completion date of this project is late 2025.

The Lafayette/Walnut Creek Shaded Fuel Break project area will encompass 268 acres along some 11 miles of open space in the East Bay. The public and media are invited to attend the groundbreaking ceremony on January 25, 2024.

The grant directly supports Con Fire's efforts to quickly suppress fires in densely-populated wildland-urban interface and hard-to-access grassland areas before they are able to threaten homes, businesses and other property.

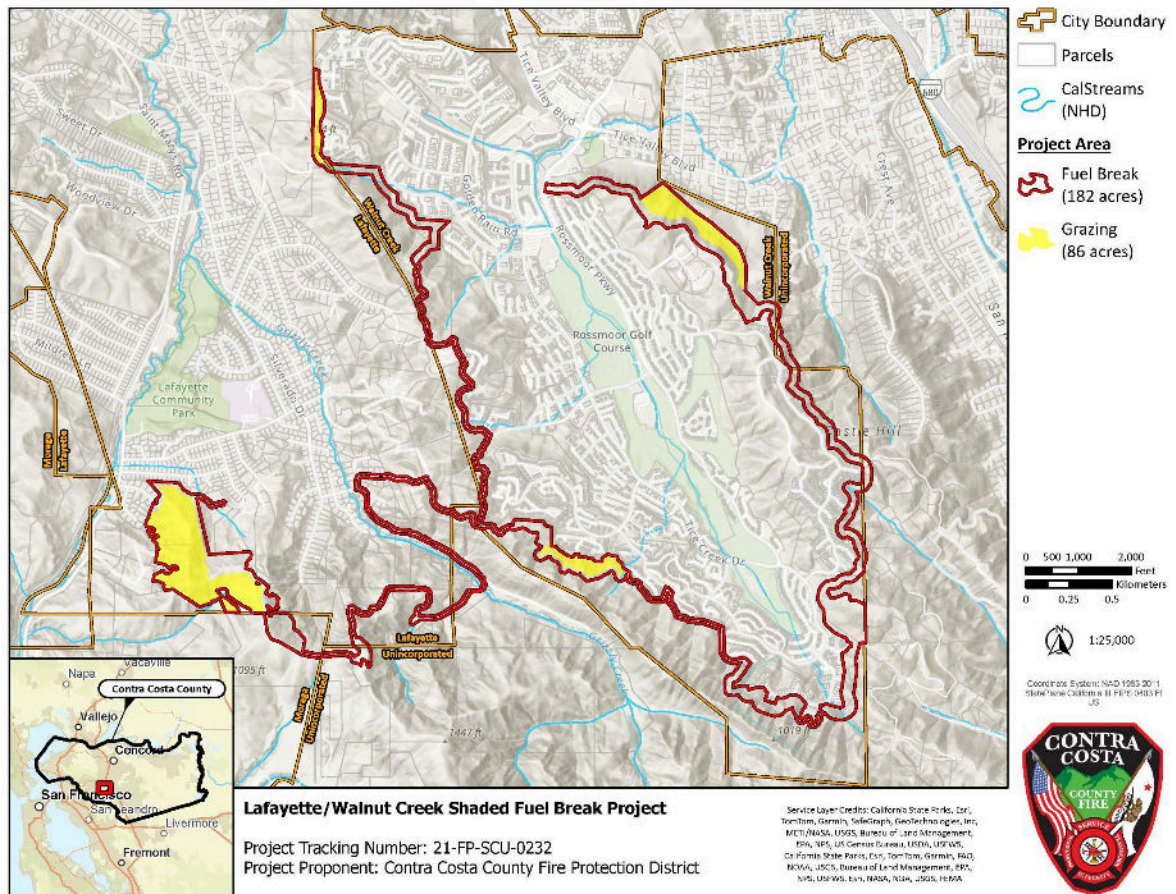
WHERE: The Rossmoor Event Center, 1021 Stanley Dollar Drive, Walnut Creek, CA

WHEN: Thursday, January 25th at 1:00 pm

Con Fire and CAL FIRE chief officers, Walnut Creek and Lafayette city officials will be in attendance and available for interviews on the project.

###

About Contra Costa County Fire Protection District (Con Fire) –With the annexation of the former East Contra Costa Fire Protection District (ECCFPD) in July 2022, and the implementation of a contract for service with the City of Pinole in March 2023, Con Fire now provides fire and emergency medical services to more than 770,000 residents in 12 cities (Antioch, Brentwood, Clayton, Concord, Lafayette, Martinez, Oakley, Pinole, Pittsburg, Pleasant Hill, San Pablo and Walnut Creek) and 10 unincorporated areas across our expanded 558 square-mile jurisdiction. Annexation resulted in the absorption of the resources and people of the former ECCFPD, adding 294 square miles of service area. Implementation of a contract for service arrangement for Pinole Fire added another 5 square miles and 20,000 residents. The District now comprises 33 fire stations, 39 companies and more than 500 employees. Through our unique ambulance Alliance, the District delivers EMS and ambulance transport services to much of Contra Costa County. In 2023, the District responded to some 95,000 incidents of all types, including nearly 75,000 fire and EMS emergencies, and dispatched over 100,000 ambulances, conducting more than 78,000 ambulance transports. Con Fire remains dedicated to preserving life, property, and the environment



Lafayette/Walnut Creek Shaded Fuel Break project map